

## Notes:

- Insulation to be energy efficient and comply with California Title 24.
- All upstairs units to have 1-1/2" concrete floors to prevent noise transmission between units.
- All apartments to include a washer and dryer.
- Roofs to be tile.
- 1<sup>st</sup> floor contains 613 sq. ft. 2<sup>nd</sup> Floor contains 676 Sq. Ft. Total 1289 sq. ft.
- Apartment to include a covered parking stall.
- Heating to be energy efficient natural gas.
- Kitchen to include tile countertops.
- Living room includes a gas fireplace.

**SF** *invest*

Title of Drawing  
Parkview 3 Bedroom 1<sup>st</sup> Floor

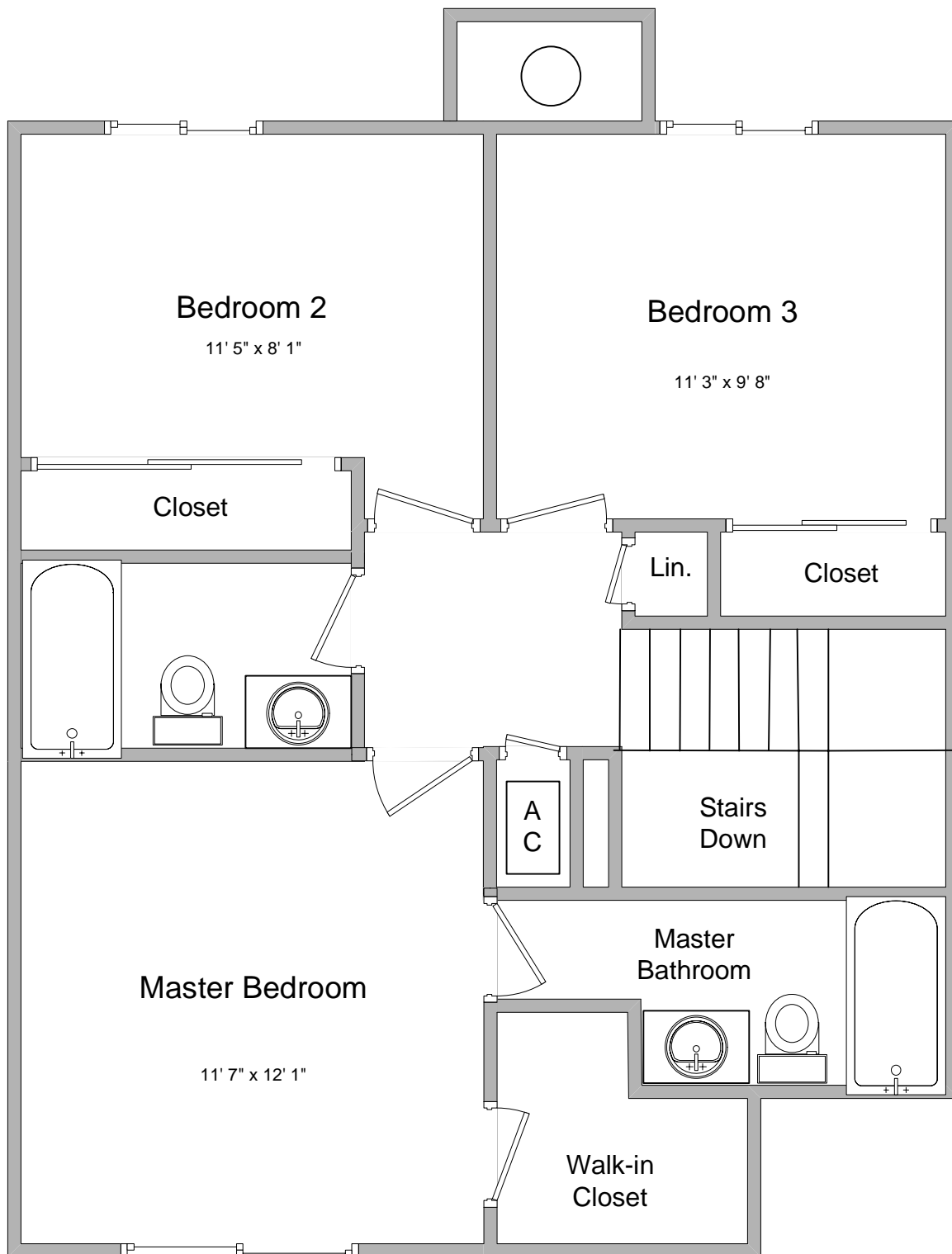
Date  
October 3, 2003

Scale  
1/4" = 1'

Drawn By  
W. Sheridan

File Ref  
Floor Plans.vsd

**3A**



## Notes:

- Insulation to be energy efficient and comply with California Title 24.
- All upstairs units to have 1-1/2" concrete floors to prevent noise transmission between units.
- All apartments to include a washer and dryer.
- Roofs to be tile.
- 1<sup>st</sup> floor contains 613 sq. ft. 2<sup>nd</sup> Floor contains 676 Sq. Ft. Total 1289 sq. ft.
- Apartment to include a covered parking stall.
- Heating to be energy efficient natural gas.
- Kitchen to include tile countertops.
- Living room includes a gas fireplace.

**SF** invest

Title of Drawing  
Parkview 3 Bedroom 2<sup>nd</sup> Floor

Drawn By  
W. Sheridan

Date  
October 3, 2003

Scale  
1/4" = 1'

File Ref  
Floor Plans.vsd

**3B**